



SHENZHEN CENTURY MAN COMM.EQUIP CO.,LTD

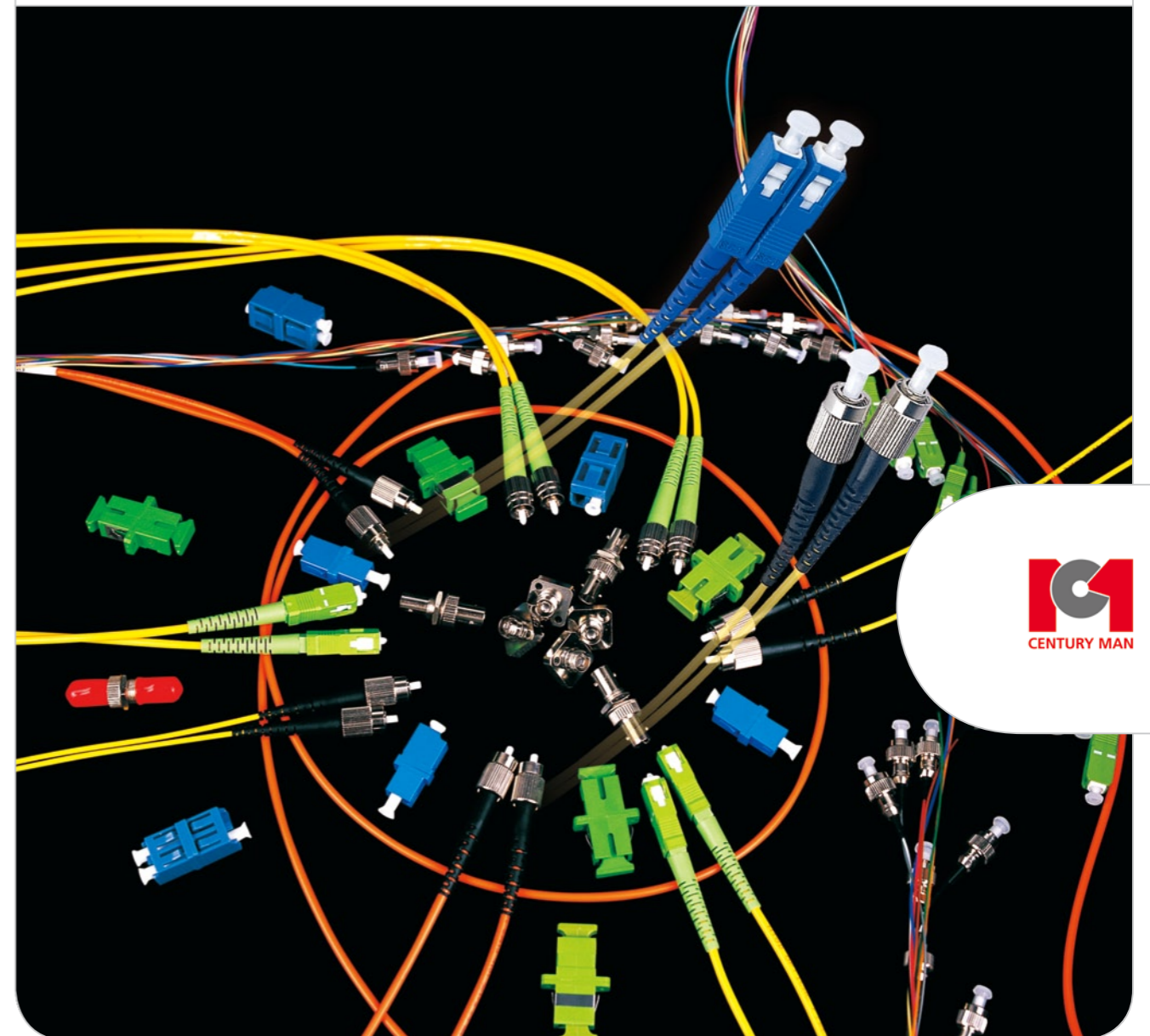
ADD:Building.B, 5th District, Hong Hua Ling Industrial
Zone, Xi Li Town., Nanshan District, Shenzhen, P. R. China.
PC: 518055
Tel: +86 755 3396 2288
Fax: +86 755 3396 2299
www.centuryman.com.cn
E-mail:centuryman@centuryman.com.cn

Copyright Reserved @ 1998-2009 Shenzhen Century Man Comm.Equip.Co.,Ltd
Specifications published here are current as of the date of publication of this document. Because we are continuously improving our products, ADC Century Man reserves the right to change specifications without prior notice. At any time, you may verify product specifications by contacting our headquarters office in Shenzhen. ADC Century Man views its patent portfolio as an important corporate asset and vigorously enforces its patents. Products or features contained herein may be covered by one or more China or foreign patents. An Equal Opportunity Employer.

400686TH 09/09 Revision 2009 All rights reserved.

OPTICAL FIBER CONNECTORS

Version 2.0





Contents

Why Choose ADC Century Man?.....	1-2
Adapters.....	3-4
Converters.....	5
Fixed Optical Attenuator	6
Optical Patch Cord/Pigtail	7-10
Switching Optical Patch Cord	11
Ribbon Pigtail.....	12
Waterproof Pigtail Cable	13
Armoured Patch Cord/Pigtail	14
FTTH Drop Cable	15

Why Choose ADC Century Man?

Overview

ADC Century Man supplies a wide range of optical fiber connectors, to meet the specific requirements of optical fiber transmission systems. Our connectors are widely used, for example, to ensure the effectiveness of cable television, data transmission, access networks, optical fiber testing equipment and local area networks.

ADC Century Man is a world-leading manufacturer of optical fiber connectors. In terms of production and sales, we are among the top-five companies in China. We can supply you with a wide variety of optical fiber connectors, as well as a full range of customized products.

Superior Production and Customization Capabilities

ADC Century Man's assembly workshop ensures exceptional quality across the production of all our optical fiber connectors. Our superior facilities cover an area of 1,000 square meters, and every month we produce over 350,000 items. We have an on-site team of professional research engineers, who can deliver customized products to meet your precise requirements.

Quality Assurance

All ADC Century Man's products meet exacting performance and safety requirements, and have passed Ministry of Information Technology Performance Tests. Our range of advanced testing devices, strict raw material selection processes, and ISO9001 certified quality management systems, ensure that we can provide you with the highest quality products.



Interferometer



IL/RL Testing Device



Grinding Miller

Why Choose ADC Century Man?

Our passive optical workshop is fully equipped with a range of advanced testing devices, to ensure high standards. These include interferometers, IL/RW testing devices, automatic tensile force testing devices, and temperature cycling chambers.

High-Quality Products

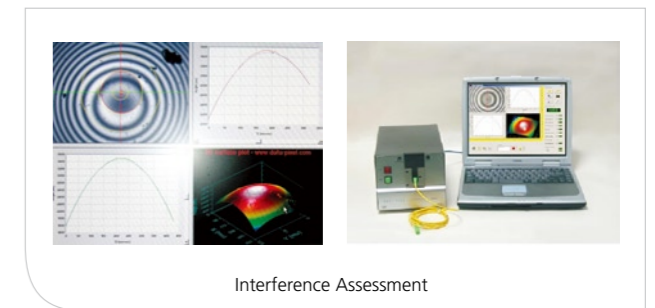
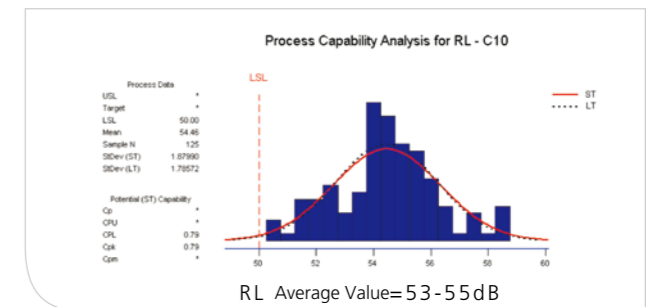
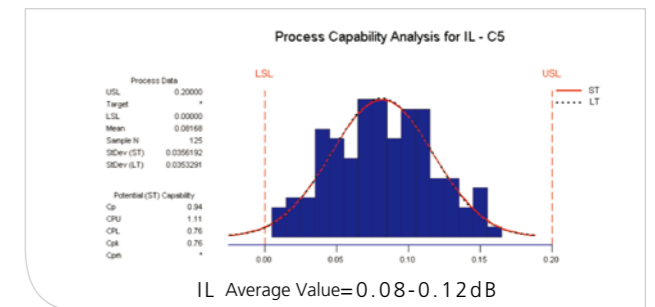
Because our products are interchangeable, and can ensure low additional loss and consistent quality, ADC Century Man can provide you with the best connectors available. The average value of Insertion Loss is 0.08-0.12dB (UPC), and the average value of Return Loss is 53-55dB(UPC), both of which exceed industry standard requirements. and to ensure you are completely satisfied, all our products are subject to 100% inspection before delivery.

Our optical fiber connectors are tested by interferometers to guarantee their repeatability and interchangeability. Concentricity is also measured to ensure the stability of each connector.



Temperature Range Assessment

Connectivity Assessment



Interference Assessment

Overview

Our extensive range of specially designed adapters can be used to join connector plugs of the same type, for example FC to FC, ST to ST or SC to SC.

FC Adapter

- Material: zirconia sleeve, plastic flange.
- Cylindrical sleeve types (internal diameter: 2.5mm).
- M8 metal thread locking system.
- FC/APC or FC/PC types available.
- Cap colors: green for FC/APC, red for FC/PC.



SC Adapter

- Material: zirconia sleeve, polybutylene terephthalate (PBT).
- Cylindrical sleeve type (internal diameter: 2.5mm).
- Push-pull structure.
- Single mode, multi-mode, simplex or duplex types available.
- Available colors: blue for single mode SC/PC, green for SC/APC, gray for multi-mode SC/PC.



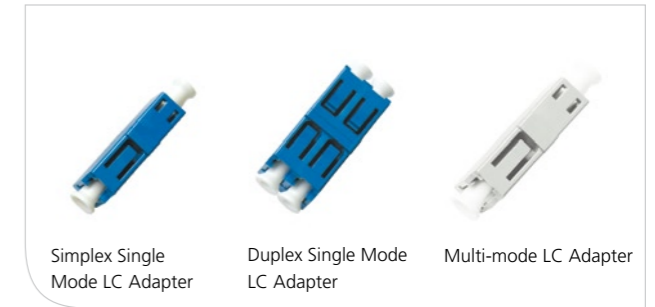
ST Adapter

- Material: zirconia sleeve, polybutylene terephthalate (PBT).
- Cylindrical sleeve type (internal diameter: 2.5mm).
- Insert-pull locking system.
- Single mode, multi-mode, simplex or duplex types available.
- Cap color: red.



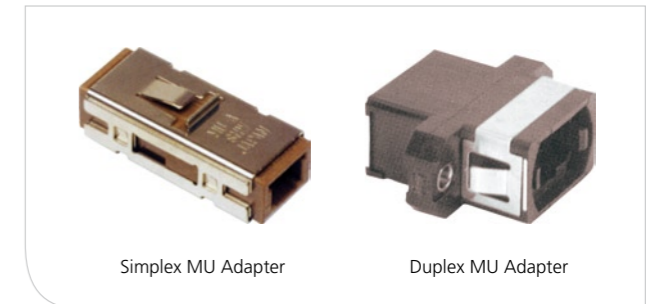
LC Adapter

- Material: zirconia sleeve, polybutylene terephthalate (PBT).
- Cylindrical sleeve type (internal diameter: 1.25mm).
- Insert-pull locking system.
- Single mode, multi-mode, simplex or duplex types available.
- Available colors: blue for single mode, gray for multi-mode.



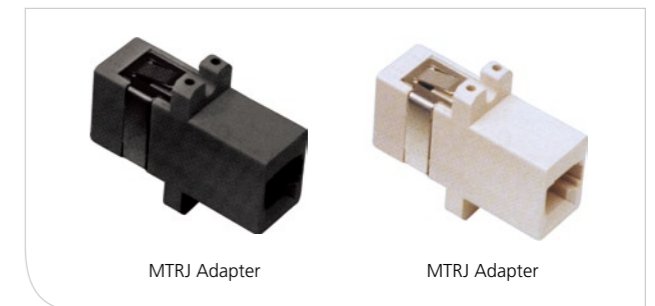
MU Adapter

- Material: zirconia sleeve, polybutylene terephthalate (PBT).
- Cylindrical sleeve type (internal diameter: 1.25mm).
- Insert-pull coupling system.
- Single mode, multi-mode, simplex or duplex types available.
- Color: brown.



MTRJ Adapter

- Push-pull & insert-pull locking system.
- Available colors: black and gray.



Converters

Overview

ADC Century Man can supply a range of converters to connect plugs of different types, for example, FC to ST, ST to SC or SC to FC. This allows greater convenience for project applications.

FC to SC

- Material: zirconia sleeve, metal flange.
- Applicable to single mode or multi-mode connectors.
- Insertion-pull life: 1000 times.



FC-SC Converter

SC to ST

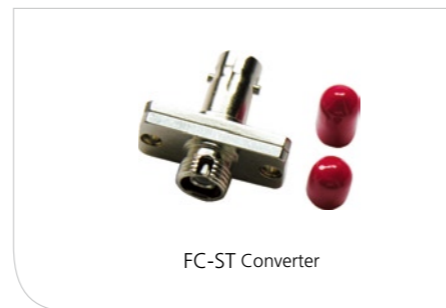
- Material: zirconia sleeve, metal flange.
- Applicable to single mode or multi-mode connectors.
- Insertion-pull life: 1000 times.



SC-ST Converter

SC to ST

- Material: zirconia sleeve, metal flange.
- Applicable to single mode or multi-mode Plural - connectors.
- Insertion-pull life: 1000 times.



FC-ST Converter

Performance parameter	Value
Insertion loss	≤ 0.2dB
Working temperature	-40℃ to +80℃
Insertion-pull times	≥ 1000 times

Fixed Optical Attenuator

Overview

Fixed optical attenuators are used to reduce the power level of an optical signal in an optical fiber. ADC Century Man has a range of optical attenuators, and can provide the precise component for your requirements.

SC Optical Attenuator

- Material: zirconia sleeve, polybutylene terephthalate (PBT).
- Attenuation range: 3-20dB.
- Insertion-pull life: 1000 times.



SC Optical Attenuator

FC Optical Attenuator

- Material: zirconia sleeve, metal flange.
- Attenuation range: 3-20dB.
- Insertion-pull life: 1000 times.



FC Optical Attenuator

ST Optical Attenuator

- Material: zirconia sleeve, metal flange.
- Attenuation range: 3-20dB.
- Insertion-pull life: 1000 times.



ST Optical Attenuator

Performance parameter	Value
Working wavelength	1310 or 1550nm
Return loss	≥ 45dB
Attenuation value and precision	1±0.51、2±0.5、3±0.75、5±0.75、8±0.8、10±1、15±1.5、20±2.0(dB)
Input/output	FC、SC、ST
Temperature range	-40℃ to +80℃

Overview

Patch cords can be used to connect one electronic or optical device to another for signal routing. They are optical fibers with connector plugs attached to both ends, enabling optical cross connections. Cords with one plug are called pigtails, while those with two ends are called switching patch cords. ADC Century Man supply patch cords and pigtails in single mode and multi mode. Types of connector plugs are FC, SC, ST, MU and LC, and types of end face are PC, UPC and APC.

FC Patch Cord/Pigtail

- Key material: ceramic ferrule.
- Diameters available: Φ 0.9mm, Φ 2.0mm, Φ 3.0mm.
- Various lengths available.
- Connection: thread locking system.
- Single mode and multi mode available.
- Sleeve colors: black for FC/UPC, green for FC/APC.

Performance

Parameter	Single mode (typical)	Single mode (max.)	Multi-mode (max.)
Insertion loss	$< 0.15\text{dB}$	$< 0.2\text{dB}$	$< 0.2\text{dB}$
Return loss	$\geq 55\text{dB}$	$\geq 50\text{dB}$	$\geq 25\text{dB}$
Working temperature	-40°C to $+80^\circ\text{C}$	-40°C to $+80^\circ\text{C}$	-40°C to $+80^\circ\text{C}$

Performance

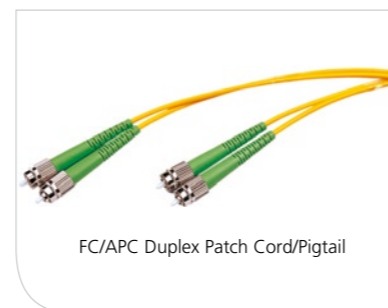
Parameter	Single mode (max.)
Insertion loss	$\leq 0.3\text{dB}$
Return loss	$\geq 60\text{dB}$
Working temperature	-40°C to $+80^\circ\text{C}$



FC/UPC Single Core Single Mode Patch Cord/Pigtail



FC/APC Single Core Single Mode Patch Cord/Pigtail



FC/APC Duplex Patch Cord/Pigtail

SC Patch Cord/Pigtail

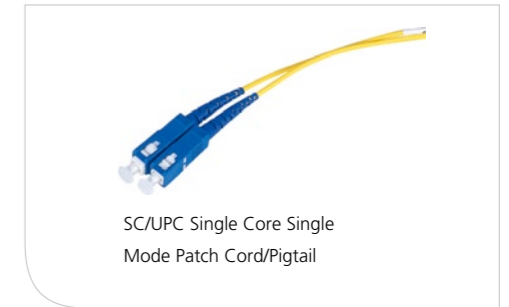
- Key material: ceramic ferrule.
- Diameters available: Φ 0.9mm, Φ 2.0mm, Φ 3.0mm.
- Various lengths available.
- Insert-pull locking system.
- Single mode and multi mode available.

Performance

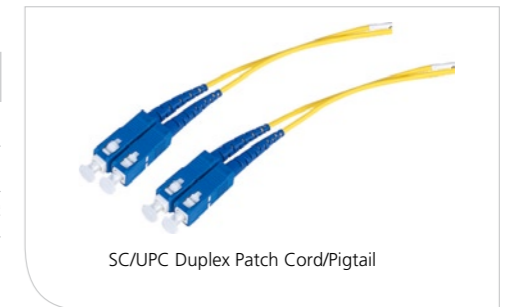
Parameter	Single mode (typical)	Single mode (max.)	Multi-mode (max.)
Insertion loss	$\leq 0.15\text{dB}$	$\leq 0.2\text{dB}$	$\leq 0.2\text{dB}$
Return loss	$\geq 55\text{dB}$	$\geq 50\text{dB}$	$\geq 25\text{dB}$
Working temperature	-40°C to $+80^\circ\text{C}$	-40°C to $+80^\circ\text{C}$	-40°C to $+80^\circ\text{C}$

Performance

Parameter	Single mode (max.)
Insertion loss	$\leq 0.3\text{dB}$
Return loss	$\geq 60\text{dB}$
Working temperature	-40°C to $+80^\circ\text{C}$



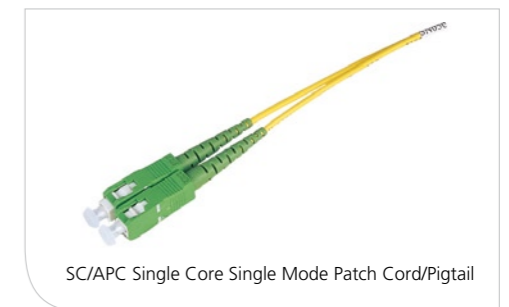
SC/UPC Single Core Single Mode Patch Cord/Pigtail



SC/UPC Duplex Patch Cord/Pigtail



SC/UPC Multi-mode Patch Cord/Pigtail



SC/APC Single Core Single Mode Patch Cord/Pigtail

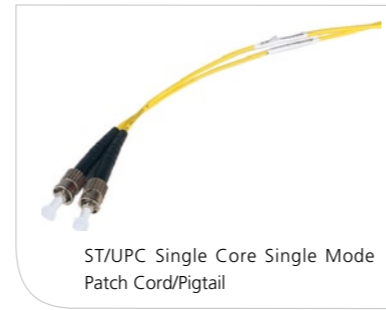
Optical Patch Cord/Pigtail

ST Patch Cord/Pigtail

- Key material: ceramic ferrule.
- Diameters available: Φ 0.9mm, Φ 2.0mm, Φ 3.0mm.
- Various lengths available.
- Bayonet rotational locking system.
- Sleeve colors: black for single mode, gray for multi-mode.

Performance

Parameter	Single mode (typical)	Single mode (max.)	Multi-mode (max.)
Insertion loss	$\leq 0.15\text{dB}$	$\leq 0.3\text{dB}$	$\leq 0.2\text{dB}$
Return loss	$> 55\text{dB}$	$> 50\text{dB}$	$> 25\text{dB}$
Working temperature	-40°C to $+80^\circ\text{C}$	-40°C to $+80^\circ\text{C}$	-40°C to $+80^\circ\text{C}$



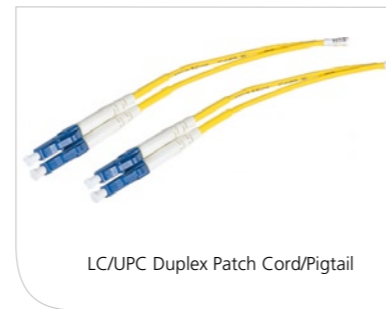
ST/UPC Single Core Single Mode Patch Cord/Pigtail



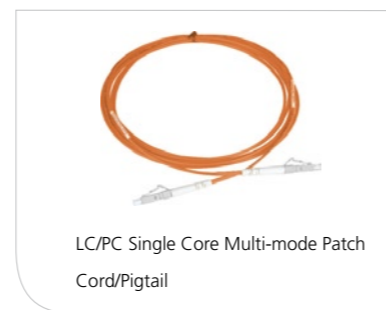
ST/UPC Single Core Multi-mode Patch Cord/Pigtail



ST/UPC Duplex Patch Cord/Pigtail



LC/UPC Duplex Patch Cord/Pigtail



LC/PC Single Core Multi-mode Patch Cord/Pigtail

LC Patch Cord/Pigtail

- Key material: ceramic ferrule.
- Diameters available: Φ 0.9mm, Φ 2.0mm.
- Various lengths available.
- Connection: insert-pull locking system.
- Single mode and multi mode available.
- Sleeve colors: blue for single modes, gray for multi-mode.

Performance

Parameter	Single mode (typical)	Single mode (max.)	Multi-mode (max.)
Insertion loss	$\leq 0.15\text{dB}$	$\leq 0.3\text{dB}$	$\leq 0.2\text{dB}$
Return loss	$> 55\text{dB}$	$> 50\text{dB}$	$> 25\text{dB}$
Working temperature	-40°C to $+80^\circ\text{C}$	-40°C to $+80^\circ\text{C}$	-40°C to $+80^\circ\text{C}$

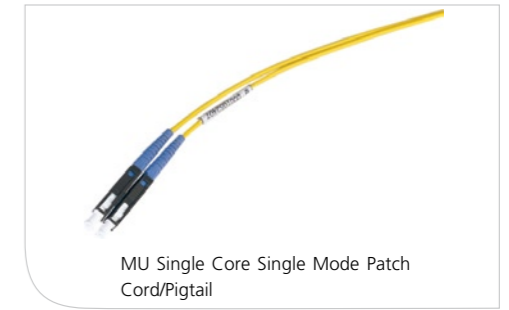
Optical Patch Cord/Pigtail

MU Patch Cord/Pigtail

- Key material: ceramic ferrule.
- Diameters available: Φ 0.9mm, Φ 2.0mm.
- Various lengths available.
- Connection: insert-pull coupling locking system.
- Single mode and multi mode available.
- Sleeve color: brown.

Performance

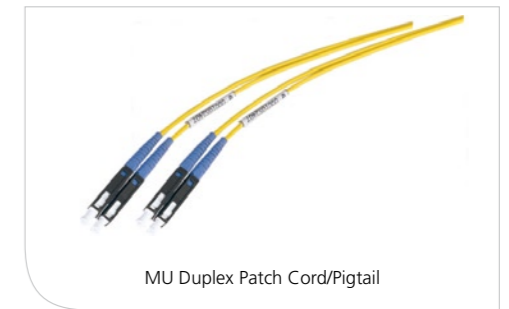
Parameter	Single mode (typical)	Single mode (max.)	Multi-mode (max.)
Insertion loss	$\leq 0.15\text{dB}$	$\leq 0.3\text{dB}$	$\leq 0.2\text{dB}$
Return loss	$> 55\text{dB}$	$> 50\text{dB}$	$> 25\text{dB}$
Working temperature	-40°C to $+80^\circ\text{C}$	-40°C to $+80^\circ\text{C}$	-40°C to $+80^\circ\text{C}$



MU Single Core Single Mode Patch Cord/Pigtail



MU Single Core Multi-mode Patch Cord/Pigtail



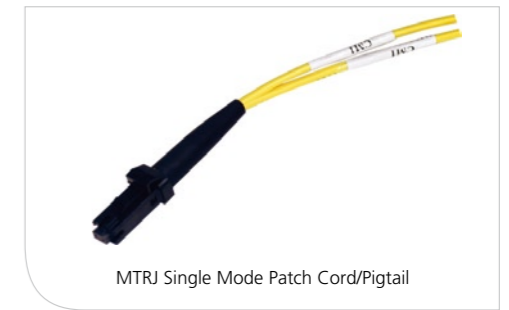
MU Duplex Patch Cord/Pigtail

MTRJ Patch Cord/Pigtail

- Key material: ceramic ferrule.
- Diameters available: ϕ 1.8mm.
- Various lengths available.
- Single mode and multi mode available.
- Duplex package: one ferrule can be used to splice two fibers.
- Sleeve color: black.

Performance

Parameter	Single mode (typical)	Single mode (max.)	Multi-mode (max.)
Insertion loss	$\leq 0.20\text{dB}$	$\leq 0.7\text{dB}$	$\leq 0.7\text{dB}$
Return loss	$> 4\text{dB}$	$> 35\text{dB}$	$> 25\text{dB}$
Working temperature	-40°C to $+80^\circ\text{C}$	-40°C to $+80^\circ\text{C}$	-40°C to $+80^\circ\text{C}$



MTRJ Single Mode Patch Cord/Pigtail



MTRJ Multi-mode Patch Cord/Pigtail

Switching Optical Patch Cord

Overview

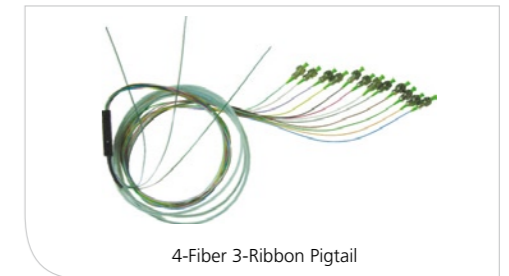
Switching optical connectors are patch cords where both ends attach to different types of plugs. ADC Century Man can supply single mode or multi-mode cords, and FC, SC, ST, MU, LC, MTRJ plugs, for PC, UPC or APC. We can also provide customized products in a variety of lengths and specifications.

OPTICAL FIBER CONNECTORS



Ribbon Pigtail

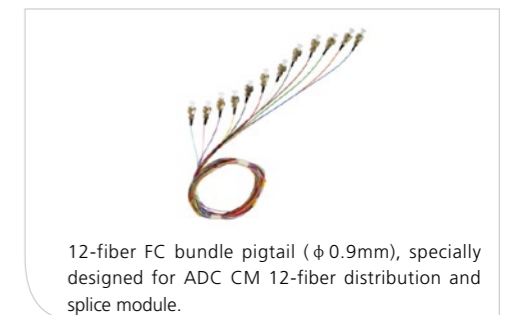
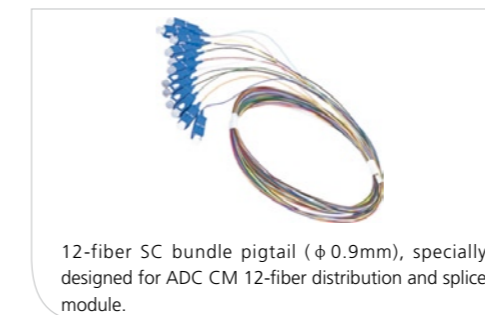
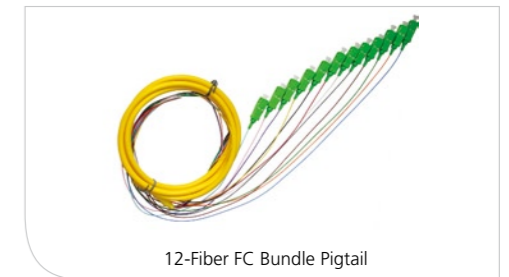
- Ribbon pigtail provides a fan of cords from a single core plug.
- Suitable for use in splice terminals.
- Simple installation, small size, large capacity.
- Low insertion loss, high reflection attenuation.
- Fan-out cord diameter: Φ 0.9mm, Φ 2.0mm.
- Capacity: 4, 6, 8, 12 cores.
- Suitable for FC, SC, ST, MU, LC connectors.



OPTICAL FIBER CONNECTORS

Bundle Pigtail

- Bundle pigtail provides a fan of cords from individual fiber plugs.
- Suitable for use in splice terminals.
- Simple installation, small size, large capacity.
- Low insertion loss, high reflection attenuation.
- Fan-out cord diameter: Φ 0.9mm, Φ 2.0mm.
- Capacity: 4, 6, 8, 12 fibers.
- Suitable for FC, SC, ST, MU, LC connectors.



Waterproof Pigtail Cable

- Excellent waterproof performance, suitable for outdoor use.
- Waterproof, rigid and anti-corrosive copper connector.
- Simple installation.
- Capacity: 2-12 cores.
- Suitable for FC, SC connectors.



Waterproof Pigtail Cable

Performance

Type	Insertion loss	Return loss	Insert-pull times	Working temperature	Tensile strength
PC	< 0.2dB	> 45dB	> 1000 times	-40℃ to +80℃	> 100N
APC	< 0.3dB	> 50dB	> 1000 times		> 100N



Waterproof Pigtail Cable

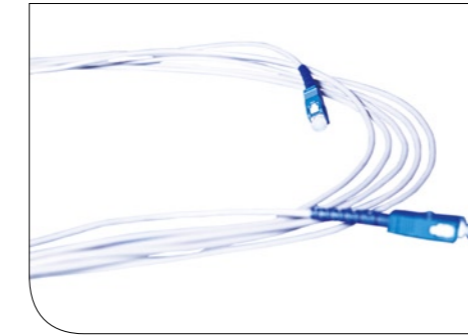
Ordering Guide of Patch Cord/Pigtail

NO.	Name	Type	Comments
Patch cord/pigtail	4-core, 3-ribbon pigtail	1/UPC-2-3x4 3-4-5	-1: Adapter type -2: Fiber mode -3: Fiber cable type -4: Fiber cable length -5: G655 or G652 fiber -6: Cable diameter
		1/APC--2-3x4 3-4-5	
	6-core,2-ribbon pigtail	1/UPC-2-2x6 3-4-5	
		1/APC-2-2x6 3-4-5	
	12-core ribbon pigtail	1/UPC-2-12 3-4-5	
		1/APC-2-12 3-4-5	
	6-core bundle pigtail	1/UPC-2-6-6 3-4-5	
		1/APC-2-6-6 3-4-5	
	12-core bundle pigtail	1/UPC-2-6-12 3-4-5	
		1/APC-2-6-12 3-4-5	
	Duplex patch cord	1/UPC-2-6-4-5	
		1/APC-2-6-4-5	
Multi-core indoor duplex pigtail cable	2-core indoor duplex pigtail cable	1/UPC-2-6-2 3-4-5	
		1/APC-2-6-2 3-4-5	
	4-core indoor duplex pigtail cable	1/UPC-2-6-4 3-4-5	
		1/APC-2-6-4 3-4-5	
	6-core indoor duplex pigtail cable	1/UPC-2-6-6 3-4-5	
		1/APC-2-6-6 3-4-5	
	8-core indoor duplex pigtail cable	1/UPC-2-6-8 3-4-5	
		1/APC-2-6-8 3-4-5	
12-core indoor duplex pigtail cable	1/UPC-2-6-12 3-4-5		
	1/APC-2-6-12 3-4-5		

Armoured Patch Cord/Pigtail

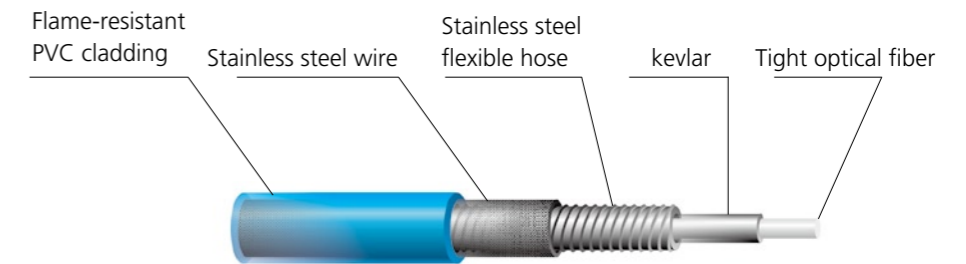
Overview

The Armoured Patch Cord/Pigtail is a new product, which has been specially designed for building-wide distribution. It provides jumper connections for a range of equipment, and fiber-to-the-desk.



Description

- Stainless steel armor protects the optical fibers powerfully and gently.
- Strong pressure-tension resistance.
- Crush resistance, bending resistance and anti-rodent bite.
- As easy to install as the electrical cable.
- Fiber core count ranges from 1 to 12 cores, allowing wider application.
- Tensile strength>300N, compressive strength>3000N/100mm.



Ordering Information

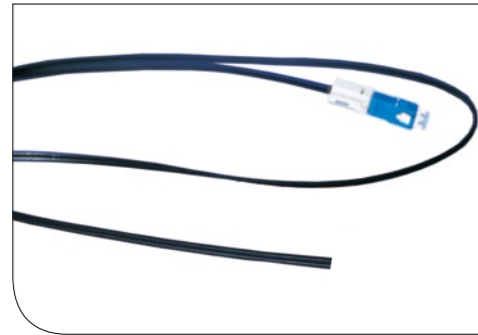
Name	Type	Comments
Duplex	1/UPC-2-6-4-5-KZ	Regulations are the same as for the general patch cord/pigtail, with KZ added for distinction.
	1/APC-2-6-4-5-KZ	
X-core duplex pigtail	1/UPC-2-6-x3-4-5-KZ	
	1/APC-2-6-x3-4-5-KZ	

Note: The armoured patch cord/pigtail with multi-core is divided into 2-core and 4-core. 1 stands for head type; 2 stands for optical fiber modulus; 3 stands for cable form; 4 stands for cable length; 5 stands for fiber type, and 6 stands for cable diameter.

FTTH Drop Cable

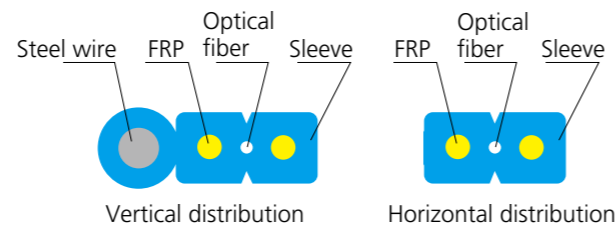
Overview

The FTTH Drop Cable creates effective connections between telecommunication terminals and users' homes. They have been specially designed by ADC Century Man for Fiber-To-The-Home.



Description

- FTTH Drop Cables have a bend radius of 7.5mm, with good crush and bend resistance.
- Dimensions are 2.0 x 3.0mm, so it is compatible with traditional optical fibers.
- It is more convenient to strip, install and connect.
- The short connection time and simplified site operation means it is more convenient to use.
- Low construction cost.
- Can be used with the quick-connector.



Ordering Information

Type	Comments
PXGL-1	Single core
PXGL-2	Duplex core
PXGL-1-X	Ribbon fiber
PXGL-1-G	With steel wire and single core
PXGL-2-G	With steel wire and duplex -core
PXGL-1-T	Sleeve for fiber core, Ribbon fiber